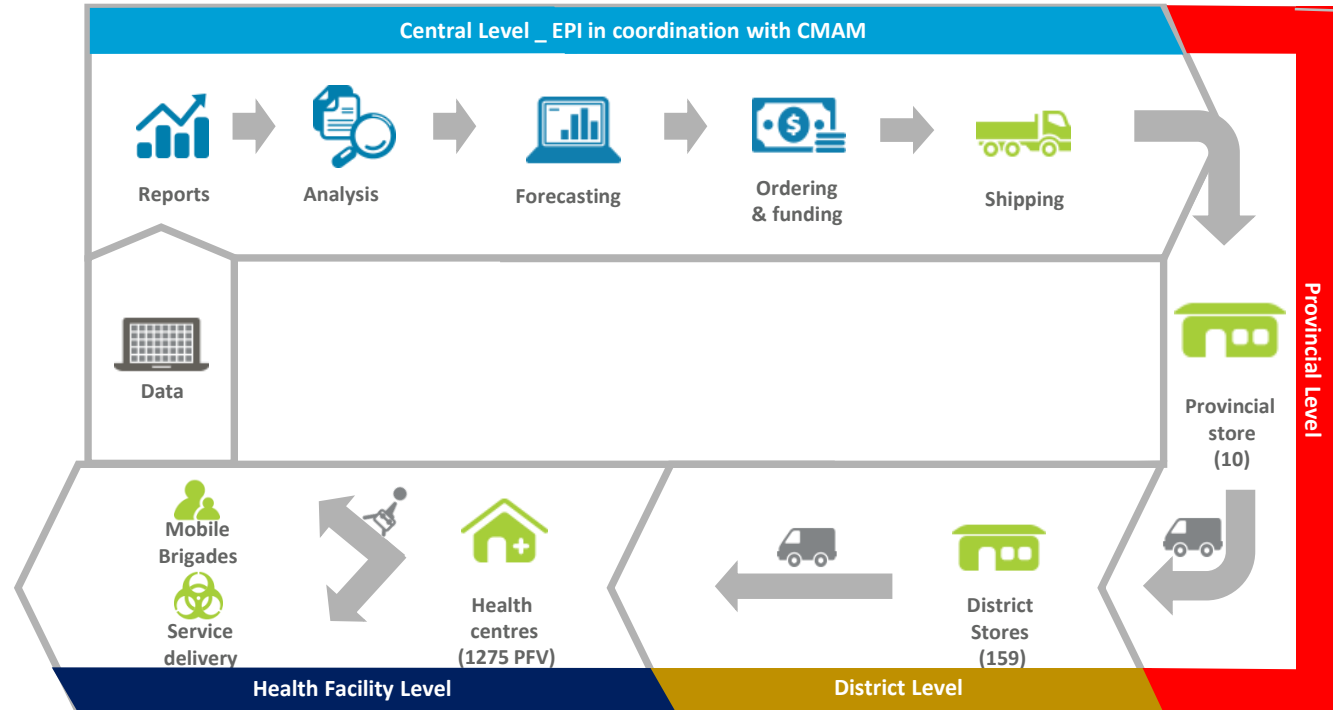


# Stock flow



Province stores send requisition forms to natl warehouse quarterly – nonDLS provinces uses SMT to figure out how much to order and at province warehouse requisitions made to districts in the last quarter. DLS provinces use SELV data

The MoH says that districts are supposed to deliver to HCS but in almost all nonDLS provinces, that does not happen. HW go pick up. In HCS close to main cidade/captial, they get delivery. Those HCS that go pick up from district sede, they take an order form with that that summarizes previous month's stock form which district EPI supervisor looks at see how much to give to HCS. DLS provinces delivery directly to HCs and decide own allocation.

Most provinces are good about delivering to districts but we have heard not amount requested but always a little less. Not sure why.

# Data flow

