

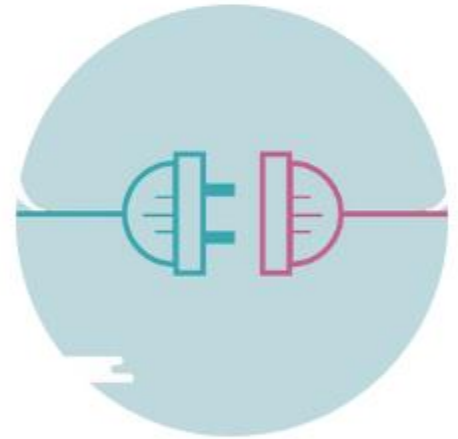
Supply Chain Control Tower



Collaboration



Visibility

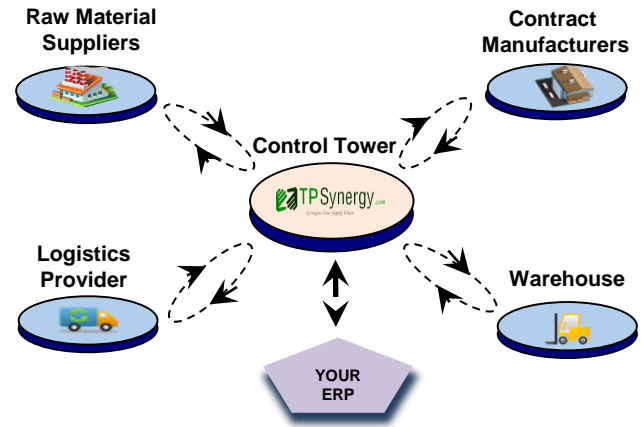


Integration

Order Collaboration

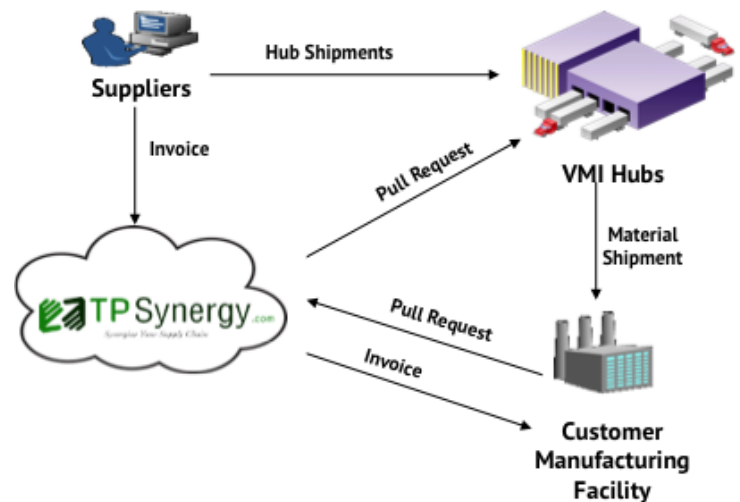
TPSynergy manages the entire life cycle of a purchase order with last milestone visibility:

- Order Confirmation/Change Requests by suppliers.
- Advance Shipment Notices by suppliers.
- Delivery milestones by transporters.
- Receipt notices from receivers.
- Electronic Invoicing and payments



Inventory Visibility

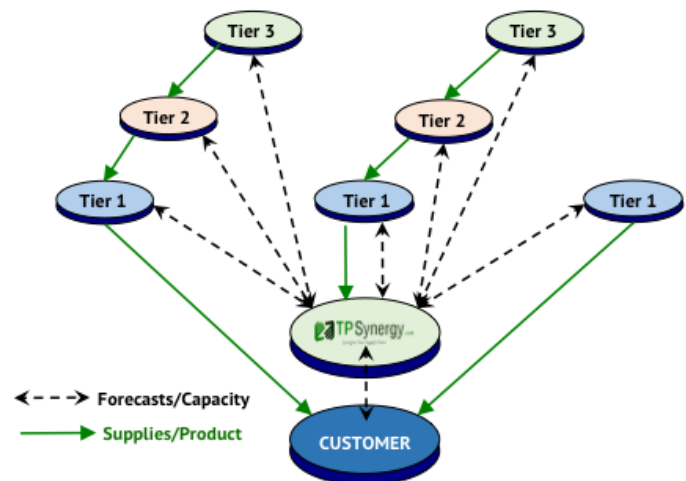
Vendor Managed Inventory (VMI) is a great tool to reduce your inventory levels to a minimum as the inventory is maintained by suppliers. However, it still needs constant visibility of current inventory levels so that it is replenished in time by the suppliers. TPSynergy achieves this by automating the consumption pull requests and providing visibility to customers, suppliers and warehouses.



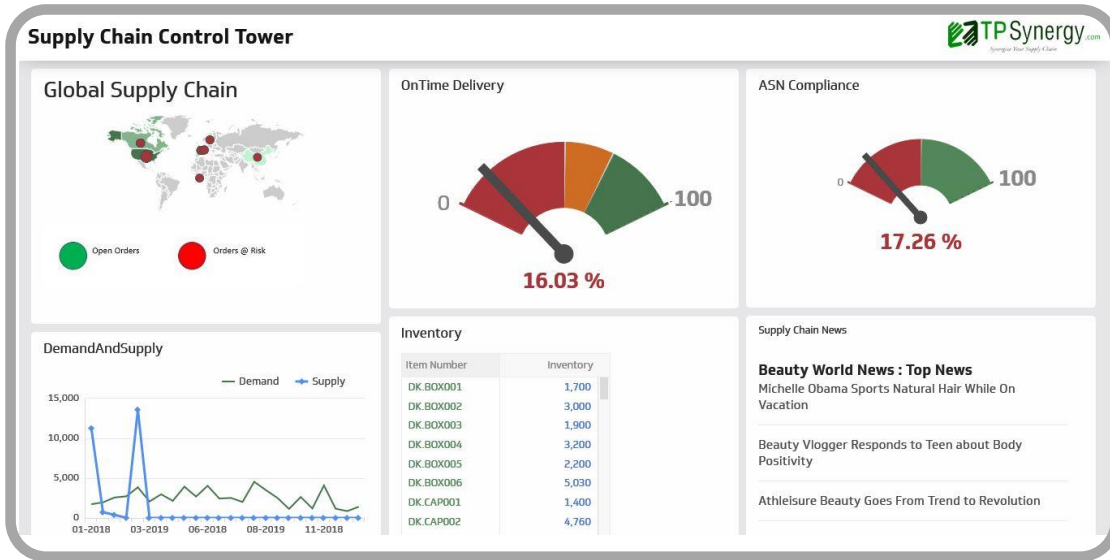
Forecast Collaboration

TPSynergy includes functionality for continuous collaboration around forecasts and availability:

- Communicate future demand to the entire supply chain.
- Receive confirmation on capacity availability from suppliers to meet future demand.
- Share extended rolling forecast updates.
- Visibility across multiple tiers of your supply chain (for inventory as well as forecasts).



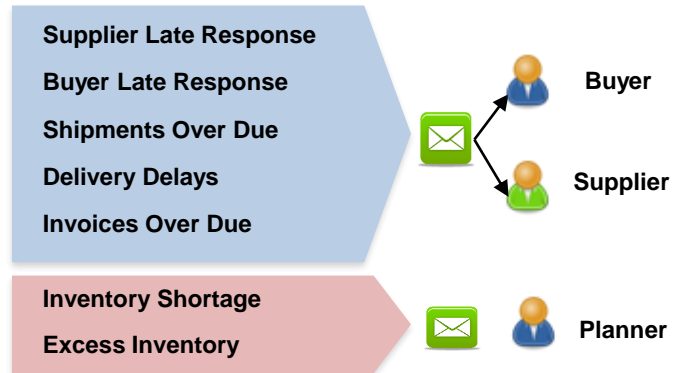
Pro-active Monitoring & Alerts



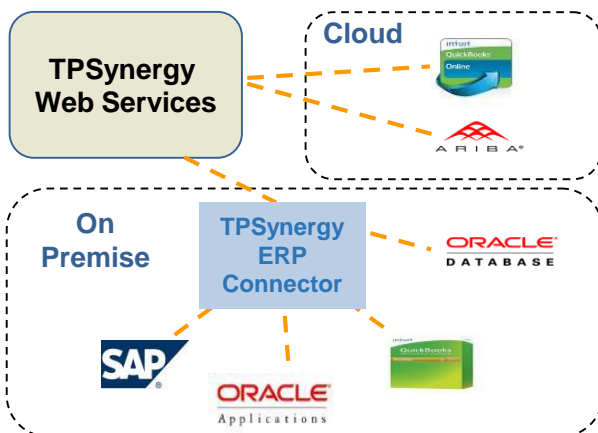
TPSynergy continuously monitors the supply chain for potential issues and automatically alerts trading partners to take pro active actions. Configurable alerts include:

- Supplier responses to purchase orders
- Shipments outside the ship window
- Materials shipped, but not received
- Shortage receipts at receiving locations
- Inventory drops below minimum level
- Invoices on hold
- Invoices not paid in time

Alerts



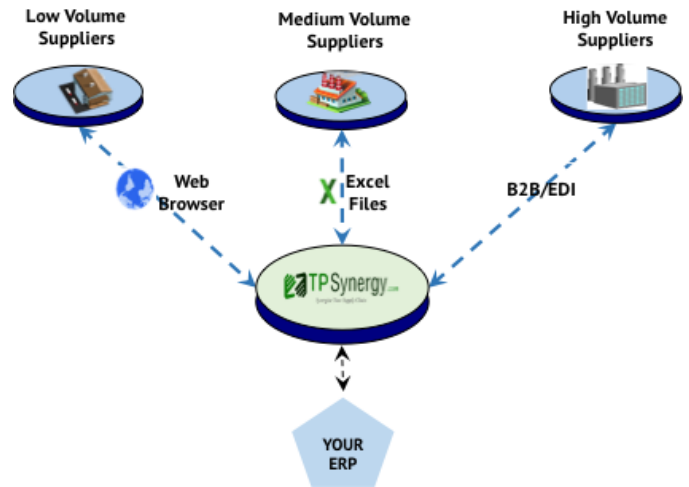
ERP Integration



TPSynergy includes standard interfaces for many popular systems such as SAP, Oracle, QuickBooks and Oracle Database. TPSynergy also provides easy to use web services for integrations. In addition, there are pre-built connectors for EDI Integration, so EDI messages can be sent with minimal effort. TPSynergy supports both X12 and EDIFACT standards for EDI Integration. Most supply chain-related EDI messages like 850, 855, 810, 820, and 856 are included. Finally, integrations to other systems are handled through CSV and Excel uploads and downloads.

Flexible Supplier Adoption

The TPSynergy platform is easily adopted by small, medium and large suppliers. Small numbers of transactions can be entered directly through the portal web forms – no integration effort is needed. Transaction batches and updates can also be uploaded along with responses downloaded using Excel files, mapped to each participant’s ERP system. Finally, direct data integration to backend ERP systems is available via EDI, EDIFACT, XML etc.



Supplier Metrics

TPSynergy supports continuous evaluation of suppliers through ready-to-use metrics. Easily measure your supplier in terms of on time delivery, product quality, pricing changes, invoice accuracy, response time, and price comparison.

CATEGORY	METRICS
Delivery	% On time Delivery # of Late Deliveries # of Early Deliveries % of Line Items Not shipped on time # of Line Items Not shipped on time Actual Vs Agreed Lead time
Quality	% Rejections # Reported Quality Issues Average Quality issue Resolution time
Cost	% Cost Reductions Year over Year # of Cost Reductions Year over Year
Response	% Buyer Change Requests Accepted # of Buyer Change Requests Accepted # of Emergency orders shipped
Corrections	# of Corrective Actions Request # CAR attributed to Supplier parts % of CAR attributed to Supplier parts

Free Proof of Concept (POC)

Our brand guarantee is “Try Before You Buy”. We set up a real system with your data so that you can test the solution for yourself and with your trading partners, completely free of charge. Contact us to learn more.

About TPSynergy

TPSynergy.com LLC is an Austin, Texas based software technology provider with deep roots in manufacturing and supply chain systems. We provide rapid and robust business solutions for some of the toughest supply chain challenges. Our order and inventory processing software connects to customers using Electronic Data Integration (EDI) and provides a simple platform for collaboration.